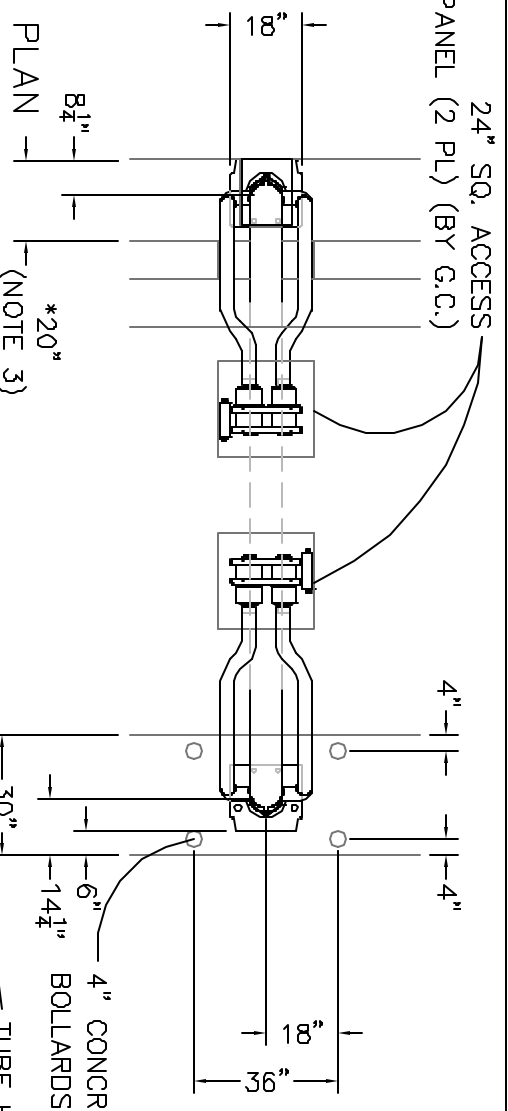


COUNTER DETAIL

G.C. TO PROVIDE OPENING FOR TUBE RUN. G.C. IS TO SEAL OPENING WHEN TUBE INSTALLATION IS COMPLETE.



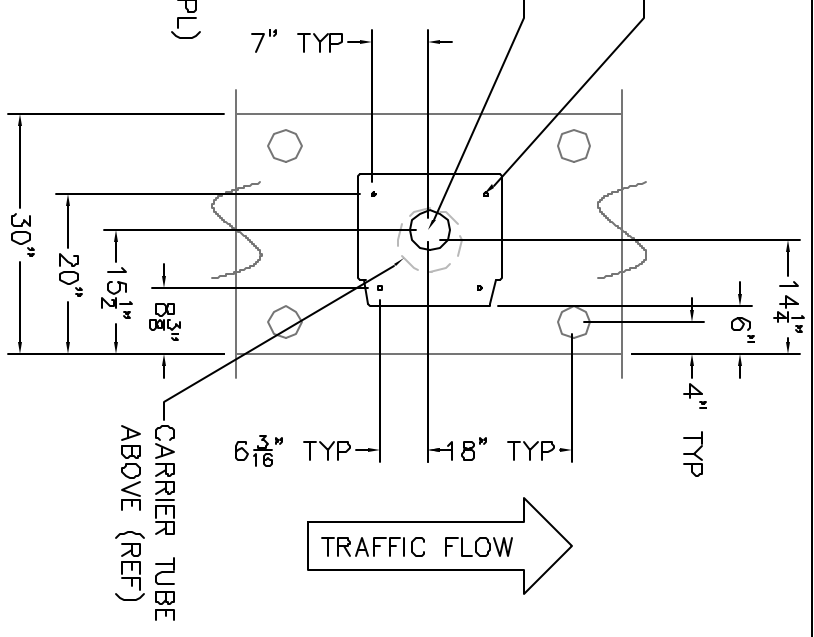
PLAN

(NOTE 3)

4" CONCRETE FILLED BOLLARDS (4 PL) (BY G.C.)

5" DIA HOLE IN BASE FOR UNDERGROUND CONDUIT

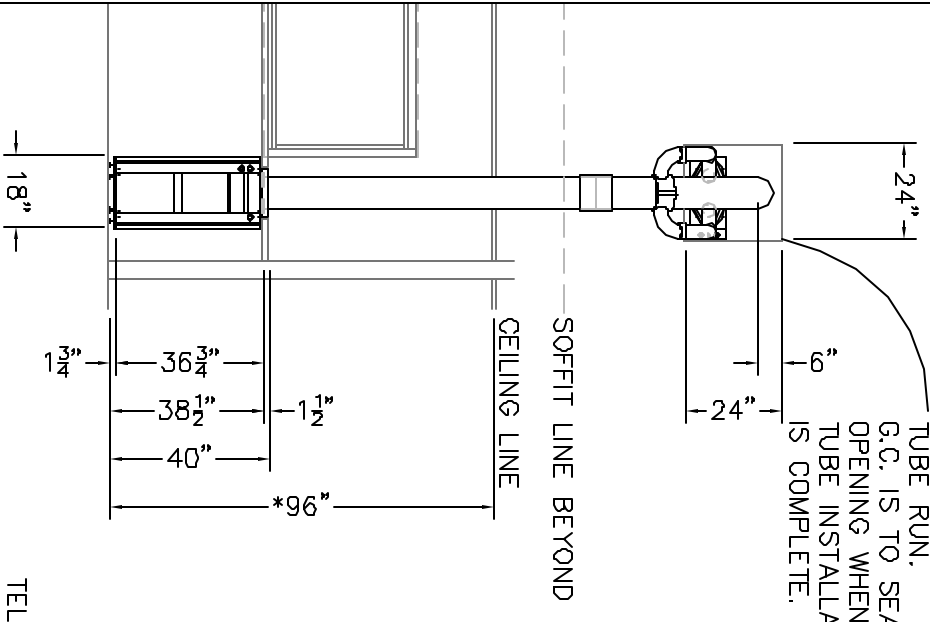
MTG HOLES FOR 3/8" x 2-3/4" WEDGE ANCHORS (4 PL)



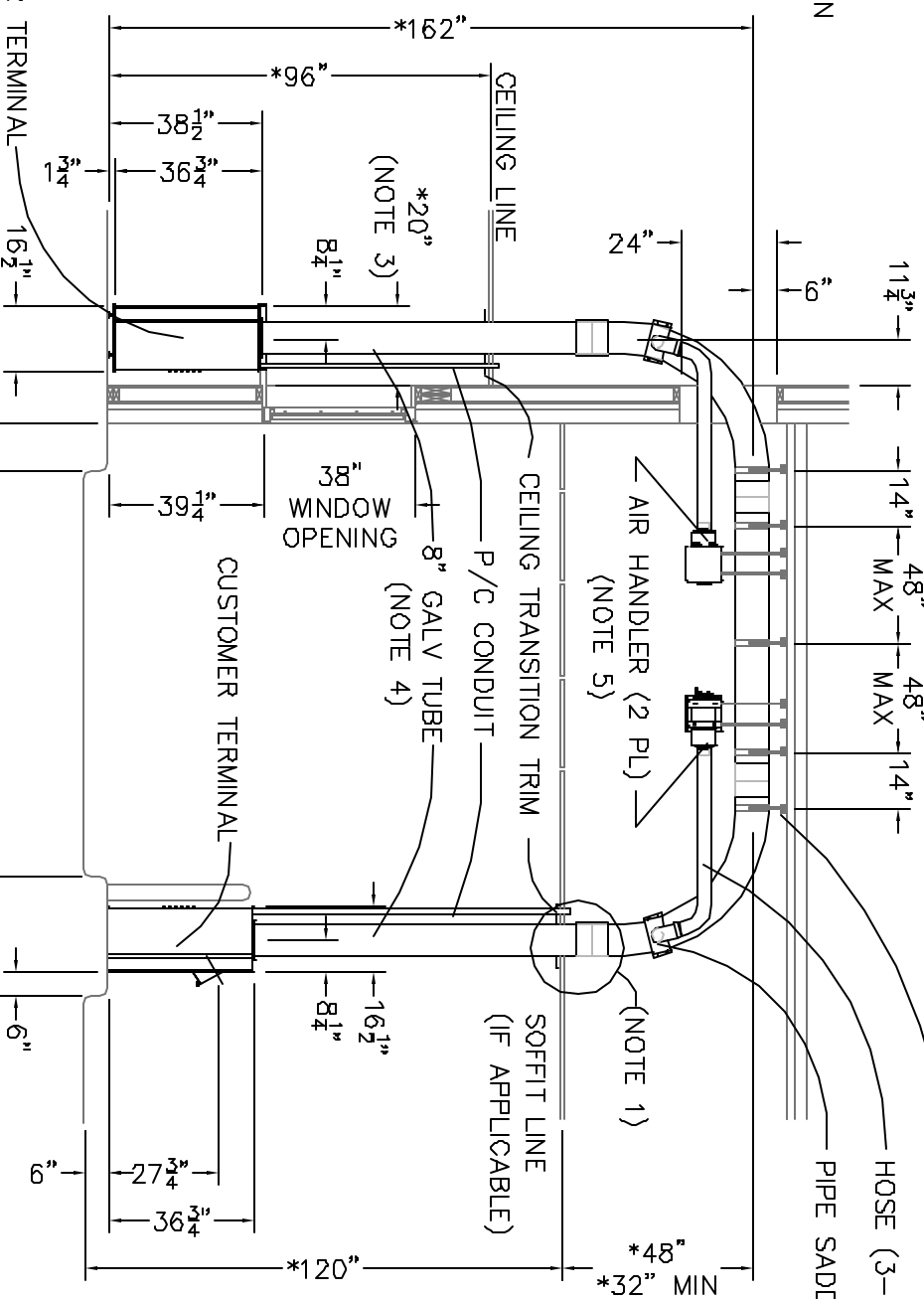
ISLAND DETAIL

CARRIER TUBE ABOVE (REF)

TRAFFIC FLOW

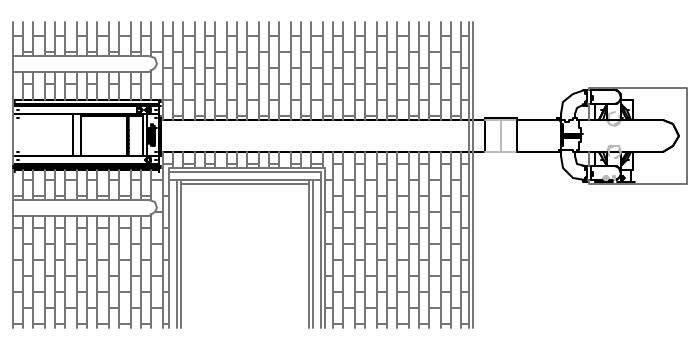


INTERIOR ELEVATION



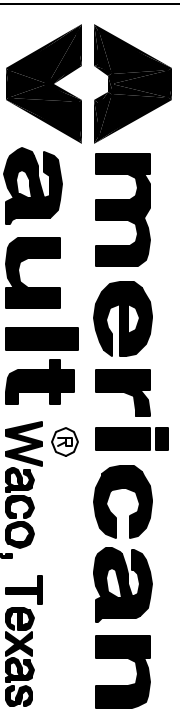
VERTICAL SECTION

EXTERIOR ELEVATION



DO NOT SCALE

\*ALL DIMENSIONS MARKED WITH AN ASTERISK MAY VARY WITH BUILDING/CANOPY CONSTRUCTION REFERENCE NOTES BELOW



PRODUCT APPLICATION DRAWING  
700 SERIES 8" COMMERCIAL TRANSPORT SYSTEM  
MODEL 781-01  
INSTALLED VIEW

SIZE	DWG NO	DATE	SHEET
B	20142	08.15.2005	3 OF 4

- NOTES:
1. CANOPY AND SOFFIT DIMENSIONS SHOWN ARE REQUIRED TO FULLY ENCLOSE BEND AND TUBE TRANSITION. VARYING FROM THESE DIMENSIONS IS ACCEPTABLE, HOWEVER THE TRANSITION WILL BE EXPOSED.
  2. THE RECOMMENDED MINIMUM ISLAND WIDTH IS 30". AN ISLAND WIDTH LESS THAN THIS CAN BE USED WITH PROPER PROTECTIVE BOLLARDS AND OR GUARDS.
  3. COUNTER-TOP DEPTH SHOWN IS MAXIMUM RECOMMENDED DEPTH WHEN THE 700 SERIES COMMERCIAL TRANSPORT SYSTEM (MODEL 781) IS USED IN COMBINATION WITH THE 300 SERIES COMMERCIAL DEAL DRAWER (MODEL 1000GA) OTHERWISE DEPTH MAY VARY FROM THAT SHOWN.
  4. TUBING AND BENDS ARE CONSTRUCTED OF 16 GA GALVANIZED STL. JOINTS ARE 14 GA STL SLIP SLEEVES WITH PROTECTION (SHRINK) SLEEVES. STL SLEEVES ARE TO BE TACK-WELDED AND SHRINK SLEEVE APPLIED. TUBING, BENDS & TUBING COMPONENTS ARE TO BE PAINTED (BY G.C.) AS JOB CONDITIONS DICTATE.
  5. AIR HANDLER ASSY'S MUST BE HORIZONTALLY MOUNTED & LEVEL FOR PROPER OPERATION OF FLAP VALVE ASSY.